

## How to apply

Initially you should contact the LEADER Delivery Team to discuss your project and the application process.

You can download the outline application form and the guidance handbook from our website.

[www.businesswestsussex.co.uk/leadergrants](http://www.businesswestsussex.co.uk/leadergrants)

## LEADER Delivery Team

Phone: **03302 228001**

Email:  
**rdpeleader@westsussex.gov.uk**

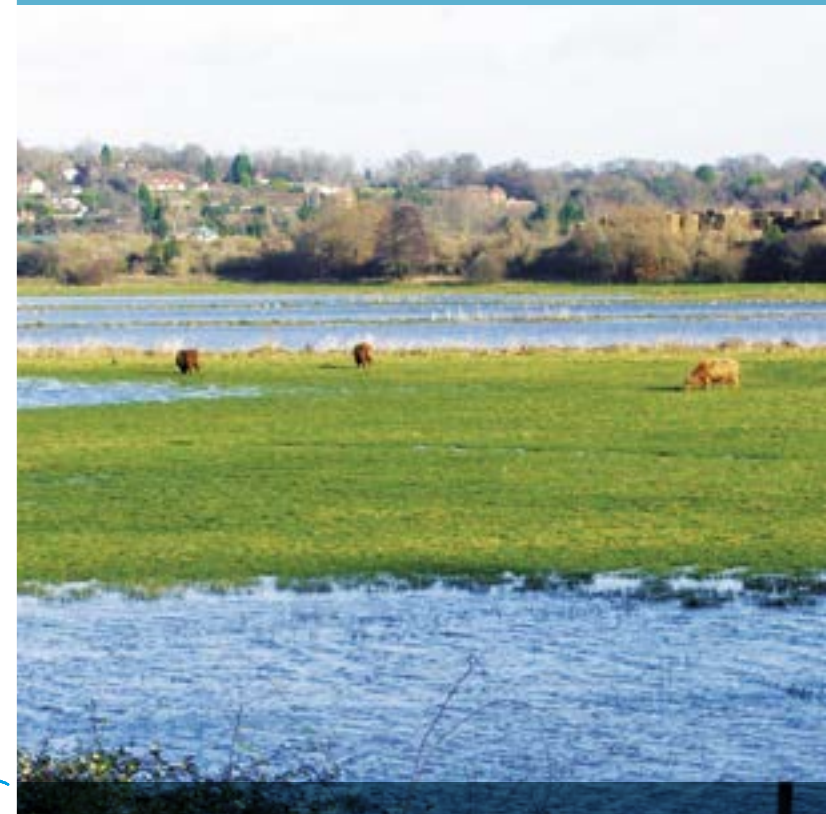
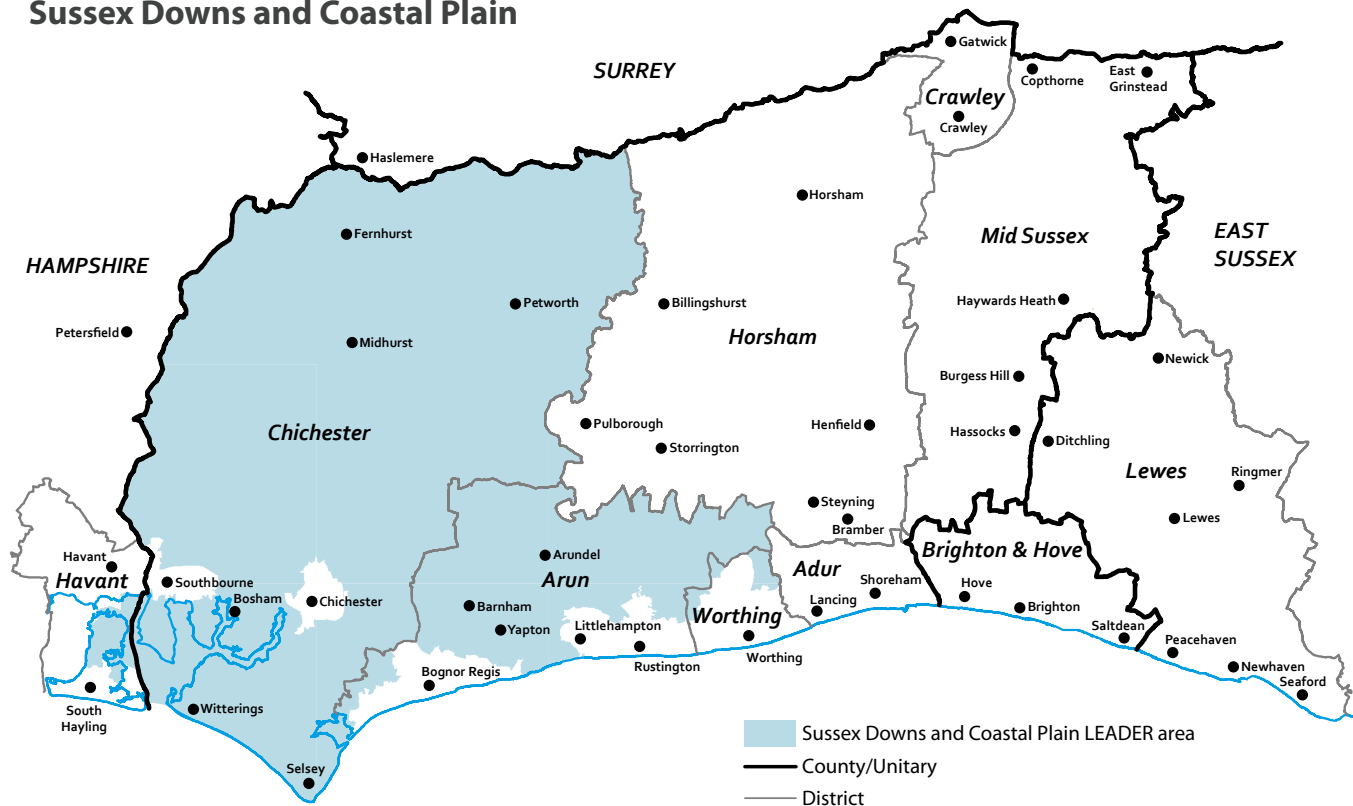
Website:  
**www.businesswestsussex.co.uk/leadergrants**

# Growing the rural economy

Sussex Downs & Coastal Plain  
LEADER grants

## LEADER area

Sussex Downs and Coastal Plain



**The LEADER scheme is part of the Rural Development Programme for England and is funded by the European Agricultural Fund for Rural Development. Under the scheme funding is allocated to Local Action Groups so that they can award grants to projects that meet local priorities.**

The Sussex Downs & Coastal Plain Local Action Group is made up of local public, private and community sector representatives from across the rural areas of Chichester and Arun Districts and Hayling Island.

**Who can apply?**

Applications can be made by farmers, growers, foresters, small rural businesses and rural community organisations who are in the Sussex Downs & Coastal Plain Local Action Group area. The projects they're applying for funding towards must also take place in the LEADER area (see the map on the next page).

**How much can I apply for?**

Applications must be for at least £2,500 and no more than £50,000. The average grant will typically be around £18,000. Grants will usually be limited to a maximum of 40% of the project's eligible costs.

A higher support rate may be available for applications by not-for-profit organisations for projects that are not intended to generate a commercial gain.

**What can be funded?**

LEADER will fund projects that:

- create jobs;
- develop rural businesses; and
- support the local rural economy.

Eligible project costs typically include capital items and associated costs such as:

- purchase of equipment and machinery;
- costs of construction, conversion or improvements to premises; and
- marketing activities such as website developments.

**What are the funding priorities?**

To be successful, applications will need to contribute towards one or more of Defra's national LEADER priorities.

- Increase farm productivity and support diversification
- Support for small rural businesses
- Boost rural tourism
- Provide rural services
- Support cultural and heritage activities
- Increase forestry productivity

Projects must also support one or more of the Sussex Downs & Coastal Plain Local Action Group's strategic priorities.

- Small businesses that thrive and grow
- A resilient land-based sector
- A robust year round visitor economy, which celebrates the area's landscape, environment and heritage
- Innovative rural services meeting the needs of local people



▲ Caroline's Dairy, Sidlesham

Arundel Brewery ▶



◀ Lodsworth Larder community shop

Stubbs Copse Woodyard ▼

